

## How to connect the individual paper pages to assemble the PDF- pattern

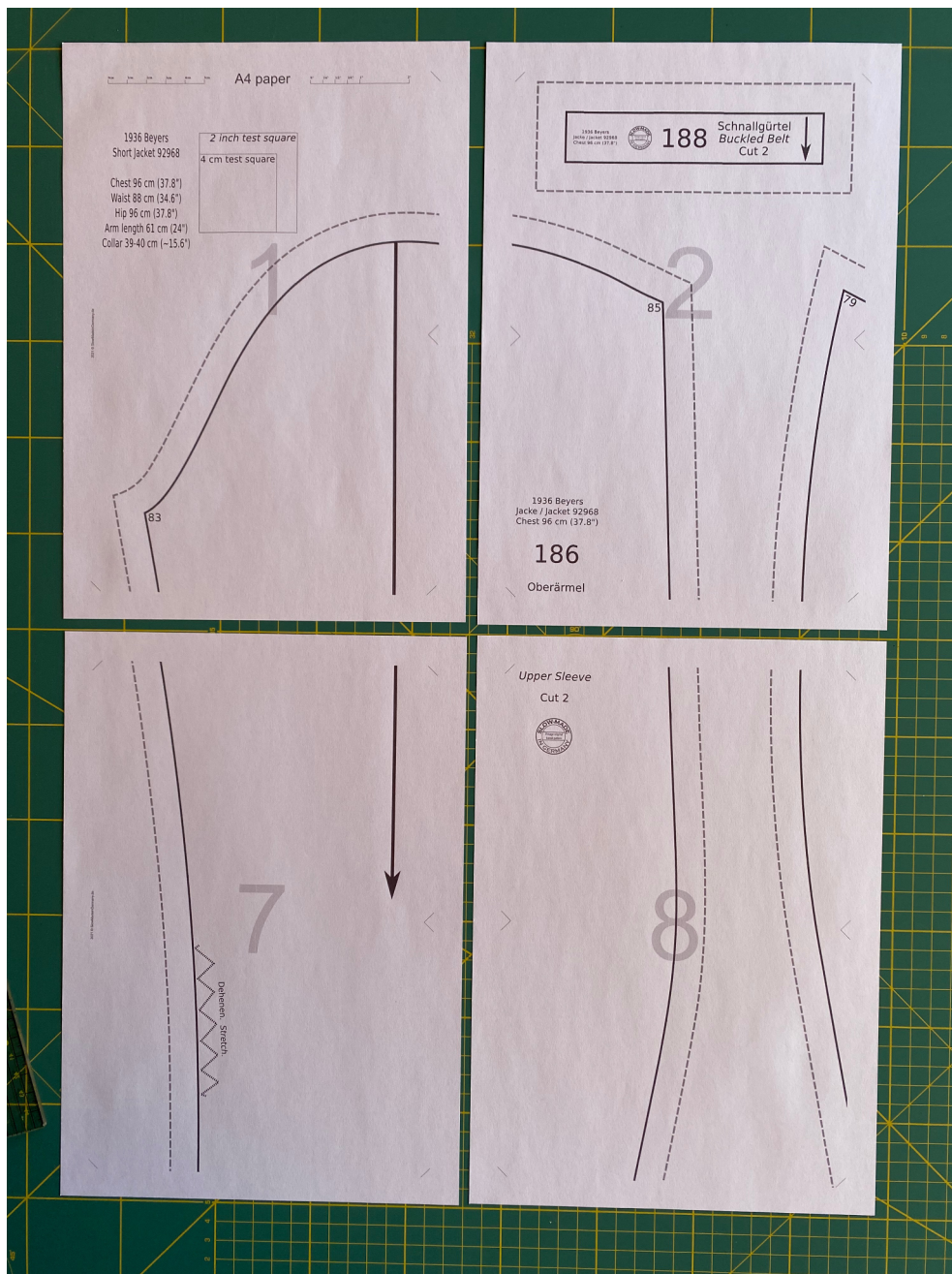
The print layout in the guide document shows you how many pages make up the pattern.

On the A4-sized paper the pattern pieces will print 1.5 cm in from the edges of the paper.

Make sure that you print the pattern at 100% scale from a dedicated PDF reader. Check that the scales print correctly on the first page.

The edges between two pages that need to connect together will always require one of the edges to be an overlap and the other to be an underlap. A trimmed edge needs an untrimmed edge to be taped onto. Think of it as being similar to sewing :).

For example, the right edge of page 1 connects with the left edge of page 2...the bottom edge of page 1 connects with the top edge of page 7...(see pictures).



Remove the excess 1.5 cm from the right side of page 1- use the ends of the “triangles” as a guide for trimming the page.

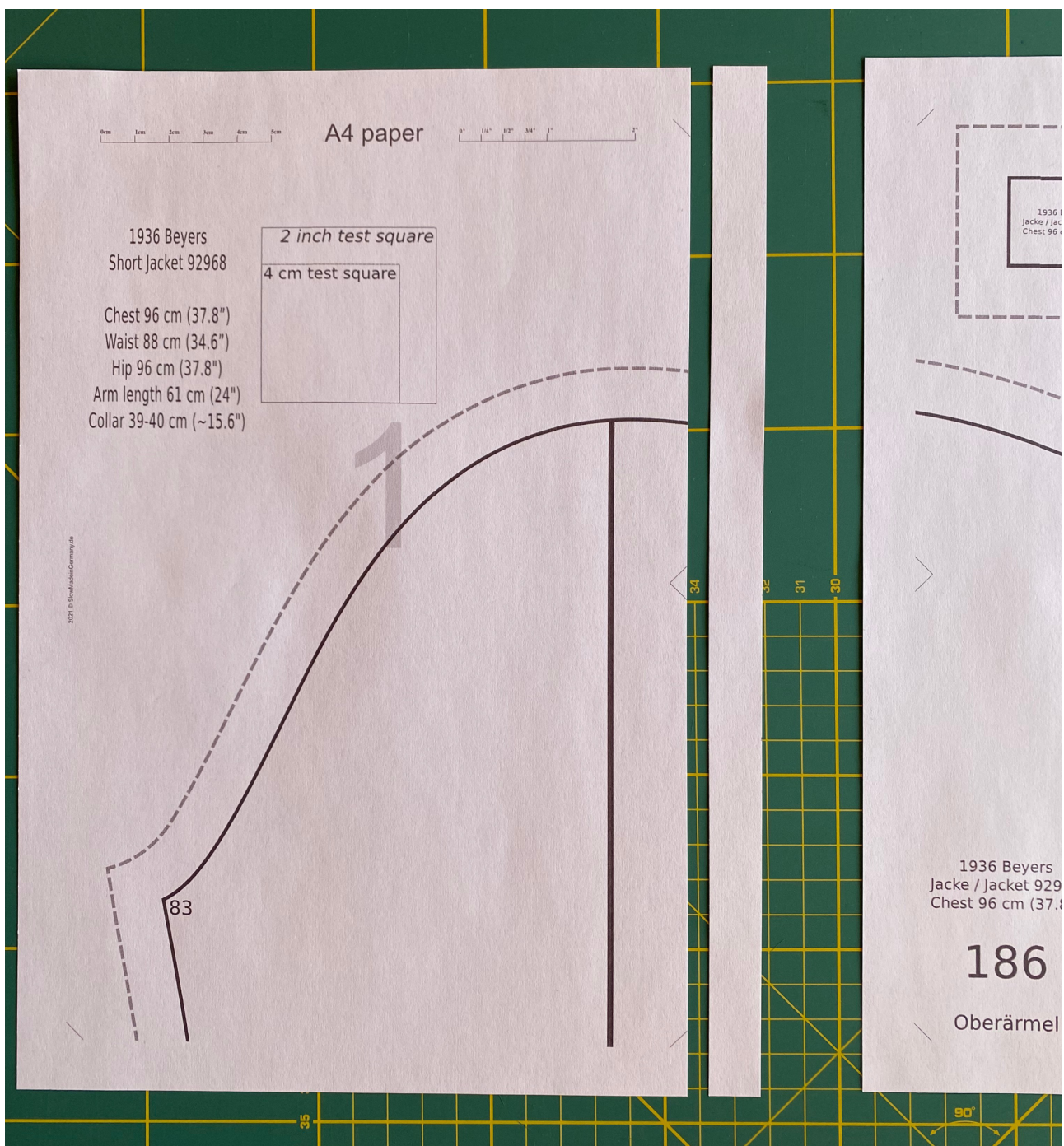
Then this cut edge is placed on top of the left side of page 2. Use the small triangles to help align the pages together.

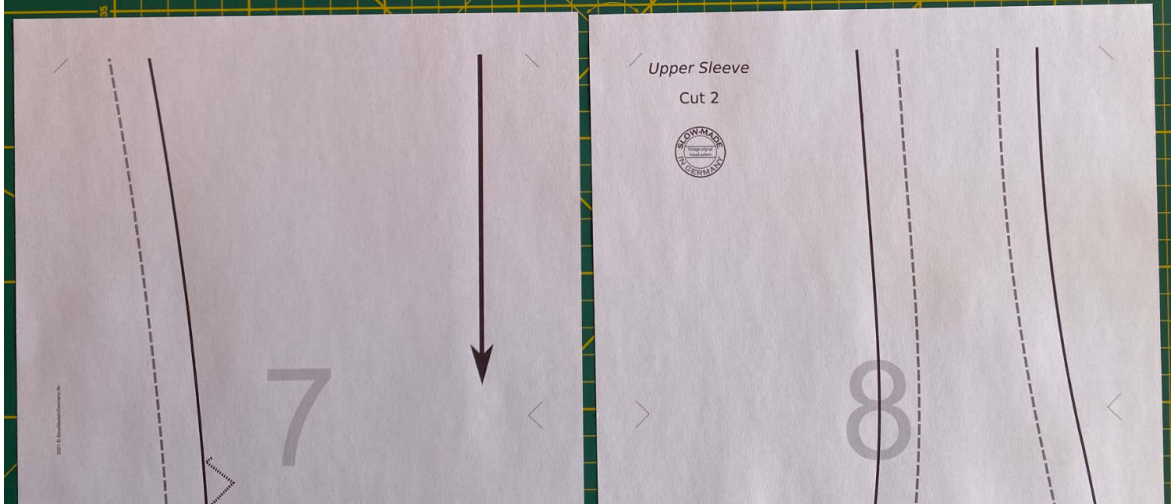
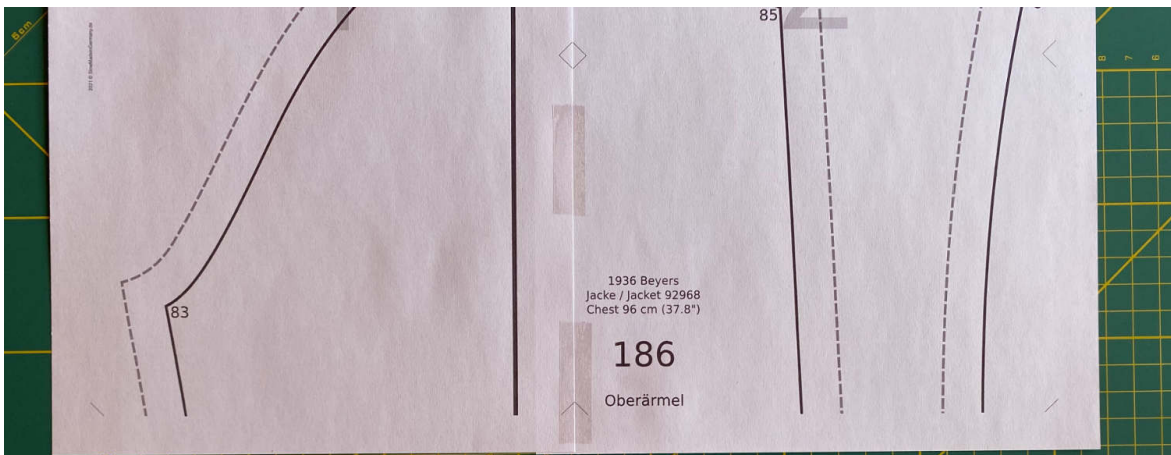
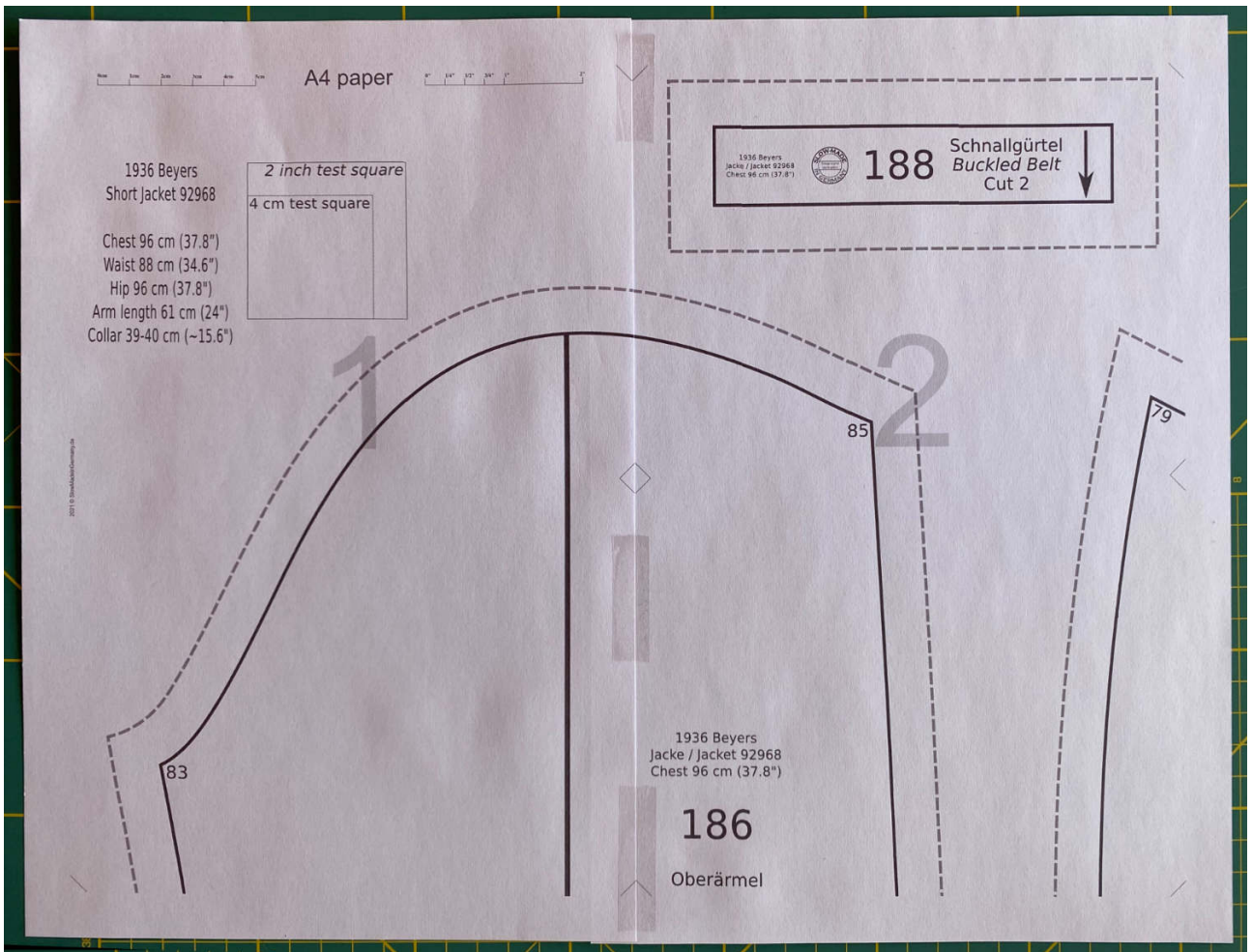
The individual lines of the pattern pieces (seam lines etc.) will match accurately, so do not remove any of these lines when trimming the pages.

The little triangles provide a guide for trimming the overlapping pages and for positioning the pages together. When the edges of four pages meet at a corner then the markings will form a symmetrical diamond shape.

For example, Page 7 needs to be trimmed at the top and right hand edge.

The following pictures show step-by-step how pages 1 and 2, then 7 and 8 all join together.

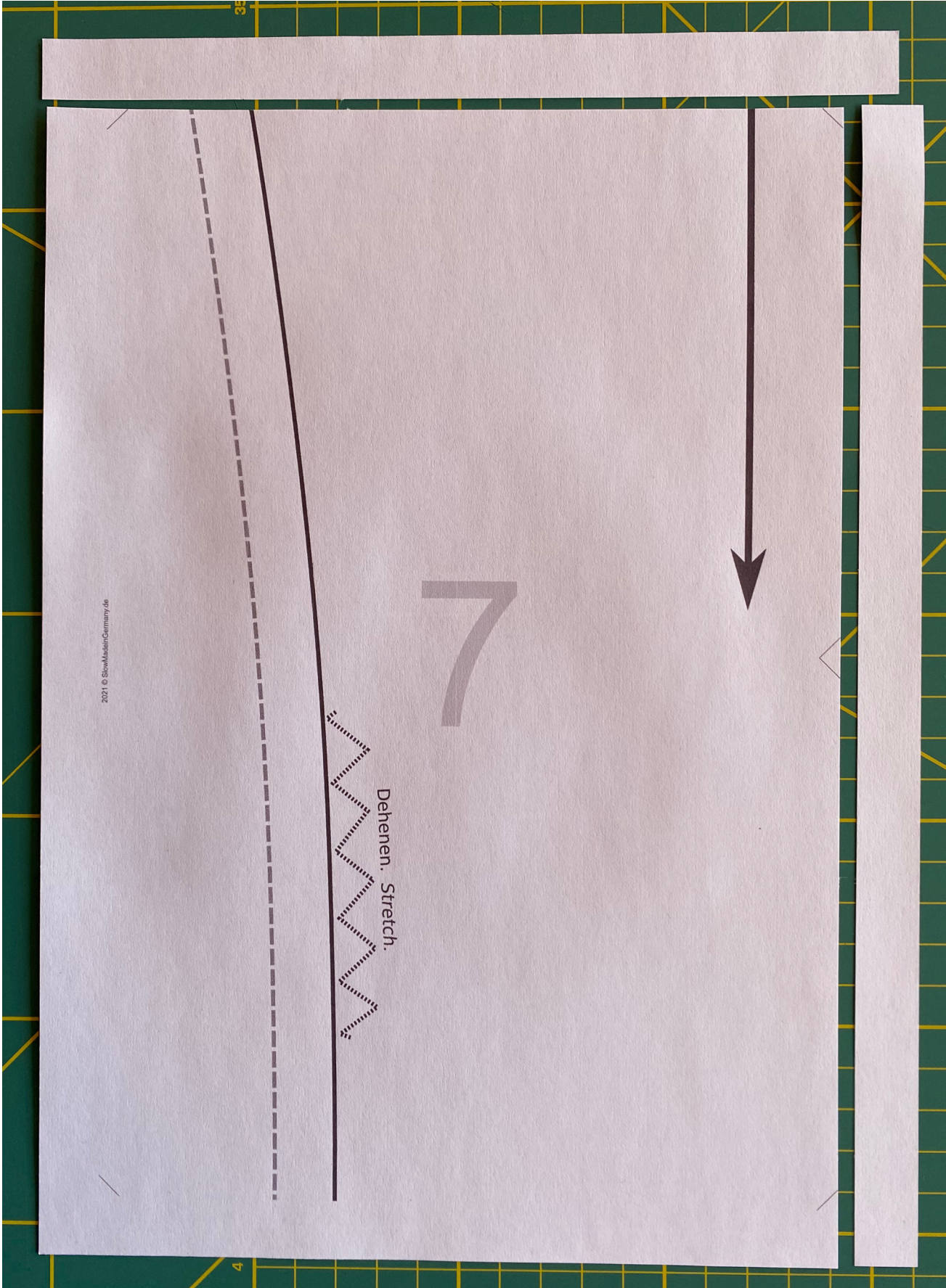
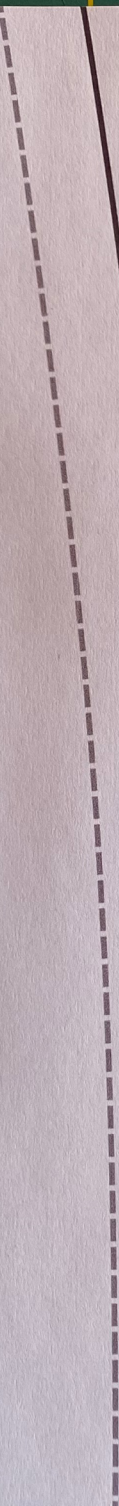




2021 © SlowMadeInGermany.de

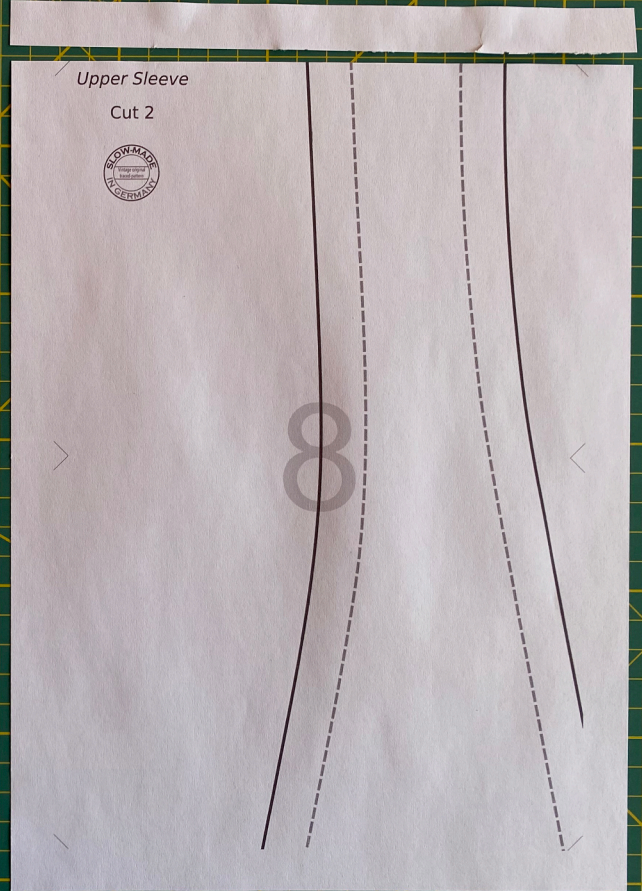
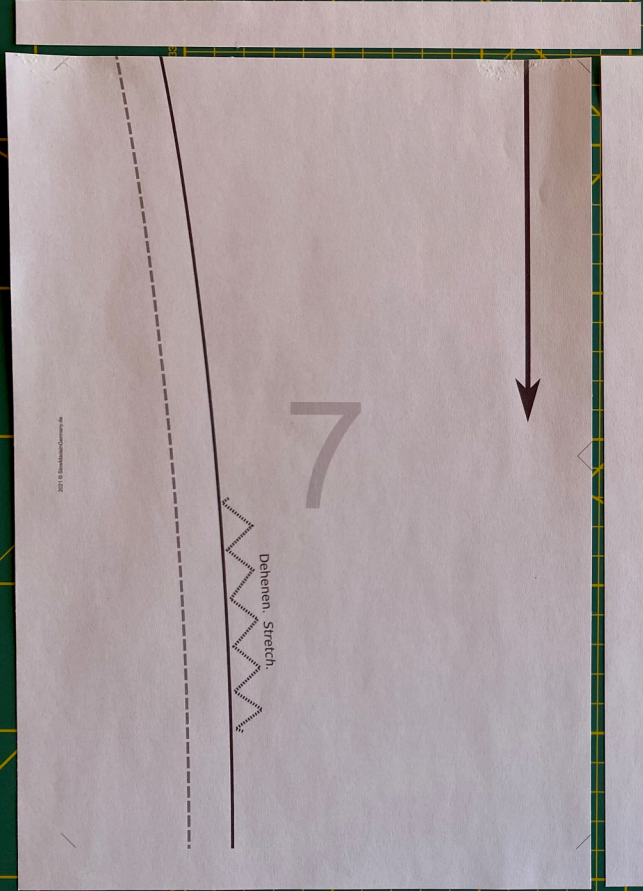
Dehnen. Stretch.

7



186

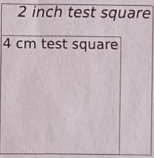
Oberärmel



A4 paper

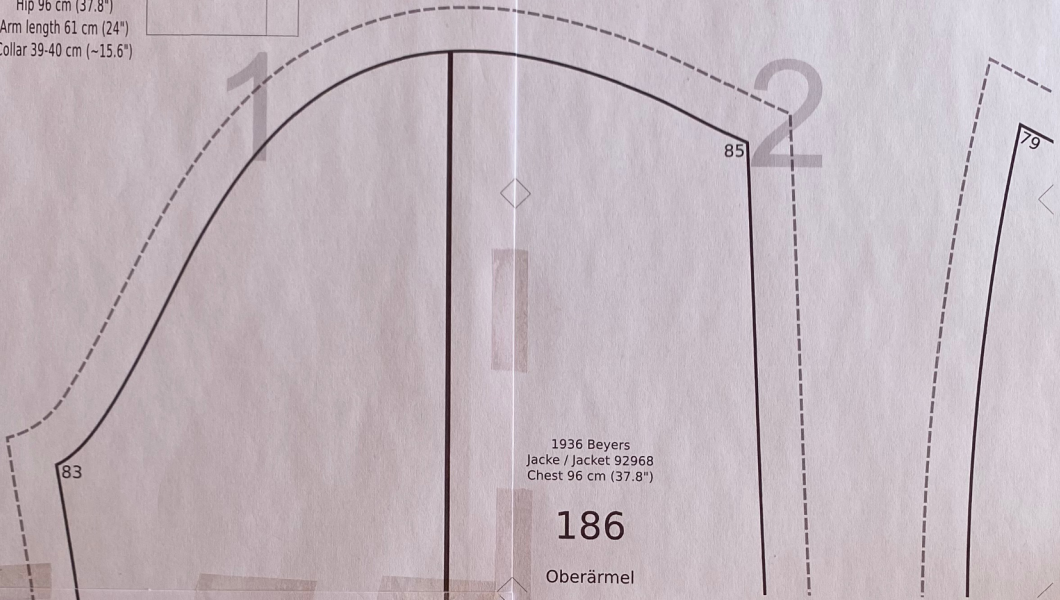
1936 Beyers  
Short jacket 92968

Chest 96 cm (37.8")  
Waist 88 cm (34.6")  
Hip 96 cm (37.8")  
Arm length 61 cm (24")  
Collar 39-40 cm (~15.6")



1936 Beyers  
Jacket / Jacket 92968  
Chest 96 cm (37.8")

**188** Schnallgürtel  
Buckled Belt  
Cut 2



1936 Beyers  
Jacket / Jacket 92968  
Chest 96 cm (37.8")

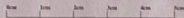
**186**  
Oberärmel

Upper Sleeve  
Cut 2

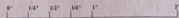


Dehnen  
Stretch

8

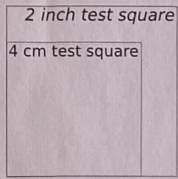


A4 paper



1936 Beyers  
Short Jacket 92968

Chest 96 cm (37.8")  
Waist 88 cm (34.6")  
Hip 96 cm (37.8")  
Arm length 61 cm (24")  
Collar 39-40 cm (~15.6")



1936 Beyers  
Jacke / Jacket 92968  
Chest 96 cm (37.8")



188

Schnallgürtel  
Buckled Belt  
Cut 2



2017 © B&W-Machete/Comma.de



1936 Beyers  
Jacke / Jacket 92968  
Chest 96 cm (37.8")

186

Oberärmel  
Upper Sleeve  
Cut 2



2017 © B&W-Machete/Comma.de

