

# 1941

## Dress 89231

An early 1940s dress with a contrasting front yoke that has three buttons. The front skirt also features an inserted pleat in the contrasting fabric.

The bodice features a centre front seam and small pleats at the waistline. A matching fabric belt is tied at the waist.

The back also has a yoke and the main dress has a centre back seam on both the bodice and the skirt.

### **Available in one original size**

Bust 102 cm (40.2")

Waist 80 cm (31.5")

Hip 112 cm (44")

1.5 cm (5/8")  
*seam allowance included*



Back view schematic

Vintage  
German  
Paper and PDF sewing patterns

# Original magazine feature from 1941

10  
Nr. 10, 25

SCHON IM  
*Hinblick* AUF

89240. Andernfalls eingeseitete Streifen be-  
leben das Jungfernd mit neuartigen Schen-  
rock. Erf. für Größe O: etwa 1,90 m Stoff 130 cm  
breit, je 0,50 m erdengestirger Stoff 130 cm  
breit. Schnitt 91 für Größe O auf dem Schnitt-  
bogen, Vorschau-Schnitt (90 Pf.) für Größe O und II.

89274. Für die ersten Frühlingstage das streifen-  
mäßige Popeline mit einseitiger Treppen-  
fassung. Erforderlich für Größe II: etwa 2,75 m  
Stoff 130 cm breit liegend. Schnitt 22 für  
Größe IV auf dem Schnittbogen. Hierzu Vorschau-  
Schnitt (90 Pf.) für Größe II und IV erhältlich.

89264. Dem sportlichen Wollrock geben vorere-  
beitete Falten die nötige Bewegungsfrei-  
heit. Erforderlich für Größe II: etwa 1,60 m Stoff,  
130 cm breit liegend. Siehe Schnitt 30 für  
Größe II auf dem Schnittbogen. Hierzu Vorschau-  
Schnitt (90 Pf.) für Größe II und IV erhältlich.

89266. Die modische Jacke mit großen außen-  
seitigen Taschen kann zum aufrechten Woll-  
rock oder Rock getragen werden. Erforderlich  
für Größe II: etwa 1,80 m Stoff 130 cm breit.  
Schnitt 23 für Größe II auf dem Schnittbogen.  
Vorschau-Schnitt (90 Pf.) für Größe II und IV.

89231. Besonders geschickt und klug ist die  
Zusammenstellung von zweierlei Stoff an die-  
sem Model. Erf. für Größe III: etwa 1,50 m dunk-  
ler Stoff, 0,75 m heller Stoff je 92 cm breit.  
Schnitt 14 für Größe II auf dem Schnittbogen.  
Vorschau-Schnitt (90 Pf.) für Größe I und III.

## A little chat about our traced vintage patterns



“Will it fit me?”

*General information for all patterns:* measure the bust/chest, waist and hip widths on the pattern pieces and compare them with those given in the size description above, the difference between each of the measurements will tell you the ‘ease’ given in this design. Compare these with your own measurements and make necessary changes to suit your size and fit preferences; for example, do you like your clothes fitted or looser than the eases given in the pattern?

Check the length-wise body measurements on the pattern pieces too; and note where the gathers, darts and other design lines will be positioned on your body to see if they sit at a flattering position that you like. Importantly, do length-wise changes before width-wise changes on the pattern pieces.

Consider making a test garment from a similar fabric, and get help to fit those difficult seams that you cannot reach or easily see yourself.

The solid lines on the pattern pieces represent the original design's outline.

1.5 cm (5/8") seam allowance has been added to all pattern pieces.

Please add hem allowances to suit your preferred construction methods.

### Introduction and links to helpful references

The original pattern was published with only a small schematic of the pattern pieces and a very brief description. **As written in the sales listing for this design, prior sewing experience is required for this vintage pattern because it is sold with written instructions that do not have diagrams.**

Regarding instructions: a basic knowledge of sewing techniques and terminology are needed; therefore I assume that you know already how to cut out and mark your fabric, when to press, where to interface etc.. I can help you place the pattern pieces in the right place and suggest a suitable sequence of construction, however, the finer details regarding exactly which sewing methods to use is a personal choice.

I've also collated a reference library of vintage sewing books (freely available online or scanned from my own collection), which can help you.

LINK: [To Sewing Resources Here!](#) (Customers who order printed patterns will receive a PDF version of this guide with the active hyperlinks included.)

**In Deutsch: [‘Grundlehre der Schneiderei’ von 1936.](#)**

There are different ways this garment could be made and I will enjoy hearing how you decided to make it and if you have any suggestions. I love seeing pictures of finished garments and you are welcome to send me photos (I don't share them with anyone), or perhaps tag us on Instagram, [@slowmadeingermany\\_patterns](#).

***You're in charge of making a really unique vintage-inspired garment!***



## Original outline and description in Deutsch

### Schnitt 24. Kleid. 89231. Größe III.

Erforderlich: etwa 2,50 m einfarbiger Stoff, 0,75 m gemusterter Stoff, je 92 cm breit.

- |   |   |   |                                   |
|---|---|---|-----------------------------------|
| + | — | + | Figur 211. 15 Vorderpassenteil.   |
|   |   |   | " 212. 16 Rückenpasse.            |
|   |   |   | " 213. 10 Vorderteil.             |
|   |   |   | " 214. 17 Rückenteil.             |
|   |   |   | " 215. 18 Aermel.                 |
| ▲ | ▲ | ▲ | " 216. 11 Vordere Ergänzungsbahn. |
| ○ | ○ | ○ | " 217. 3 Vordere Rockbahn.        |
| ○ | ○ | ○ | " 218. 6 Hintere Rockbahn.        |

Die an den umgelegten Vorderrändern mit Knopfschluß versehenen Vorderpassenteile den durch Mittelnaht verbundenen Vorderteilen aufsetzen. Den durch Mittelnaht verbundenen und oben je zwischen \*\* erforderlich eingehaltenen Rückenteilen die Rückenpasse aufsetzen. Schulter- und Seitennähte schließen, dabei linksseitlich bis \* offen lassen. Den vorderen Rockbahnen die vordere Ergänzungsbahn zwischensetzen und liniengemäß die Falten überplätten. Durch Seitennähte die durch Mittelnaht verbundenen hinteren Rockbahnen anfügen, dabei links bis \* offen lassen. Die Ergänzungsbahn oben einreihen und den Rock der vorn durch X auf \* treffend abgesteppte Falten eingengten Taille ansetzen. Den Seitenschlitz mit Schluß versehen. Die Aermel zur Rundung schließen und einsetzen. Die 2 cm breite Schlauchblende zum Gürtel ist 1,50 m lang.



### Original Deutsch

Die an den umgelegten Vorderrändern mit Knopfschluß versehenen Vorderpassenteile den durch Mittelnaht verbundenen Vorderteilen aufsetzen.

Den durch Mittelnaht verbundenen und oben je zwischen \*\* erforderlich eingehaltenen Rückenteilen die Rückenpasse aufsetzen. Schulter- und Seitennähte schließen, dabei linksseitlich bis \* offen lassen.

Den vorderen Rockbahnen die vordere Ergänzungsbahn zwischensetzen und liniengemäß die Falten überplätten.

Durch Seitennähte die durch Mittelnaht verbundenen hinteren Rockbahnen anfügen, dabei links bis \* offen lassen.

Die Ergänzungsbahn oben einreihen und den Rock der vorn durch X auf \* treffend abgesteppte Falten eingengten Taille ansetzen.

Den Seitenschlitz mit Schluß versehen.

Die Ärmel zur Rundung schließen und einsetzen. Die 2 cm breite Schlauchblende zum Gürtel ist 1,50 m lang.

## Original outline and description in Deutsch

### Schnitt 24. Kleid. 89231. Größe III.

Erforderlich: etwa 2,50 m einfarbiger Stoff, 0,75 m gemusterter Stoff, je 92 cm breit.

- |   |              |                         |
|---|--------------|-------------------------|
| + | Figur 211.15 | Vorderpassenteil.       |
| + | " 212.16     | Rückenpasse.            |
| + | " 213.16     | Vorderteil.             |
| + | " 214.17     | Rückenteil.             |
| + | " 215.18     | Aermel.                 |
| + | " 216.11     | Vordere Ergänzungsbahn. |
| + | " 217.3      | Vordere Rockbahn.       |
| + | " 218.6      | Hintere Rockbahn.       |

Die an den umgelegten Vorderrändern mit Knopfschluß versehenen Vorderpassenteile den durch Mittelnaht verbundenen Vorderteilen aufsetzen. Den durch Mittelnaht verbundenen und oben je zwischen \* erforderlich eingehaltenen Rückenteilen die Rückenpasse aufsetzen. Schulter- und Seitennähte schließen, dabei linksseitlich bis \* offen lassen. Den vorderen Rockbahnen die vordere Ergänzungsbahn zwischensetzen und liniengemäß die Falten überplätten. Durch Seitennähte die durch Mittelnaht verbundenen hinteren Rockbahnen anfügen, dabei links bis \* offen lassen. Die Ergänzungsbahn oben einreihen und den Rock der vorn durch x auf \* treffend abgesteppte Falten eingeeigten Taille ansetzen. Den Seitenschlitz mit Schluß versehen. Die Aermel zur Rundung schließen und einsetzen. Die 2 cm breite Schlauchblende zum Gürtel ist 1,50 m lang.



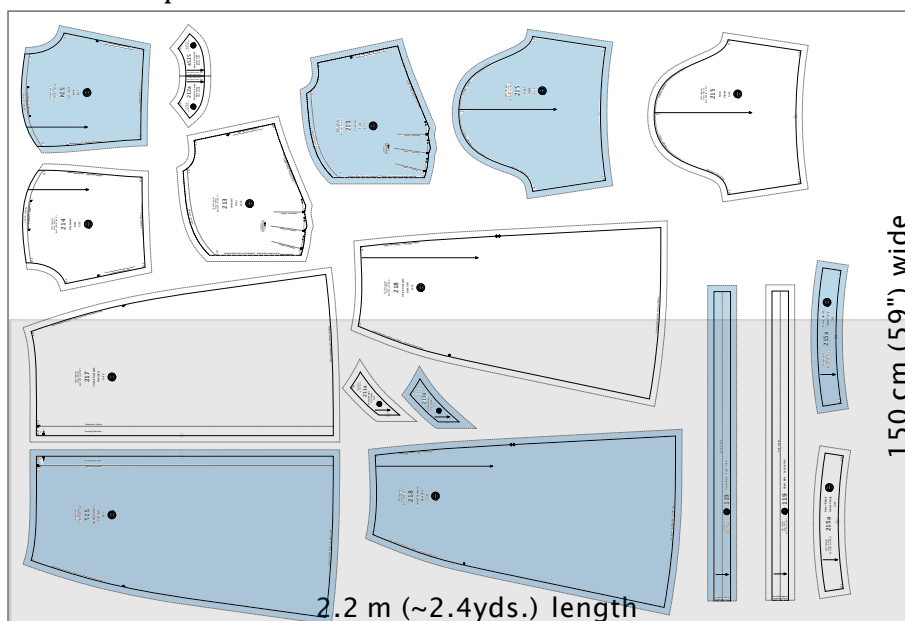
## Requirements

The original pattern states:

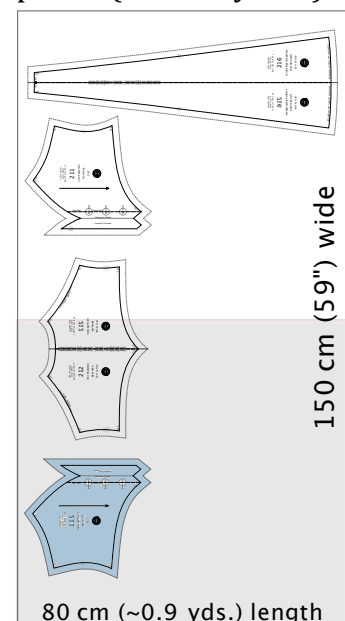
- 2.5 m (~2.8 yds.) of 92 cm (~36") wide plain fabric for the main dress.
- 0.75 m (~30") of 92 cm (~36") wide plain fabric for the contrasting yokes and the pleat insert on the front skirt.
- Using the one-way napped layout below, I estimate approximately 2.2 m (~2.4 yds.) of 150 cm (~59") wide plain fabric for the main dress, plus ~80 cm (~0.9 yd) wide plain fabric for the contrasting yokes and pleat insert on the front skirt.
- Three buttons for the front yoke.
- In-seam closure - either a zipper or hooks and eyes for a placket.
- Optional shoulder pads.

## A suggested one-way napped cutting layouts

### Main dress pieces



### Contrasting fabric pieces (insert + yokes)



## Guide to pattern pieces

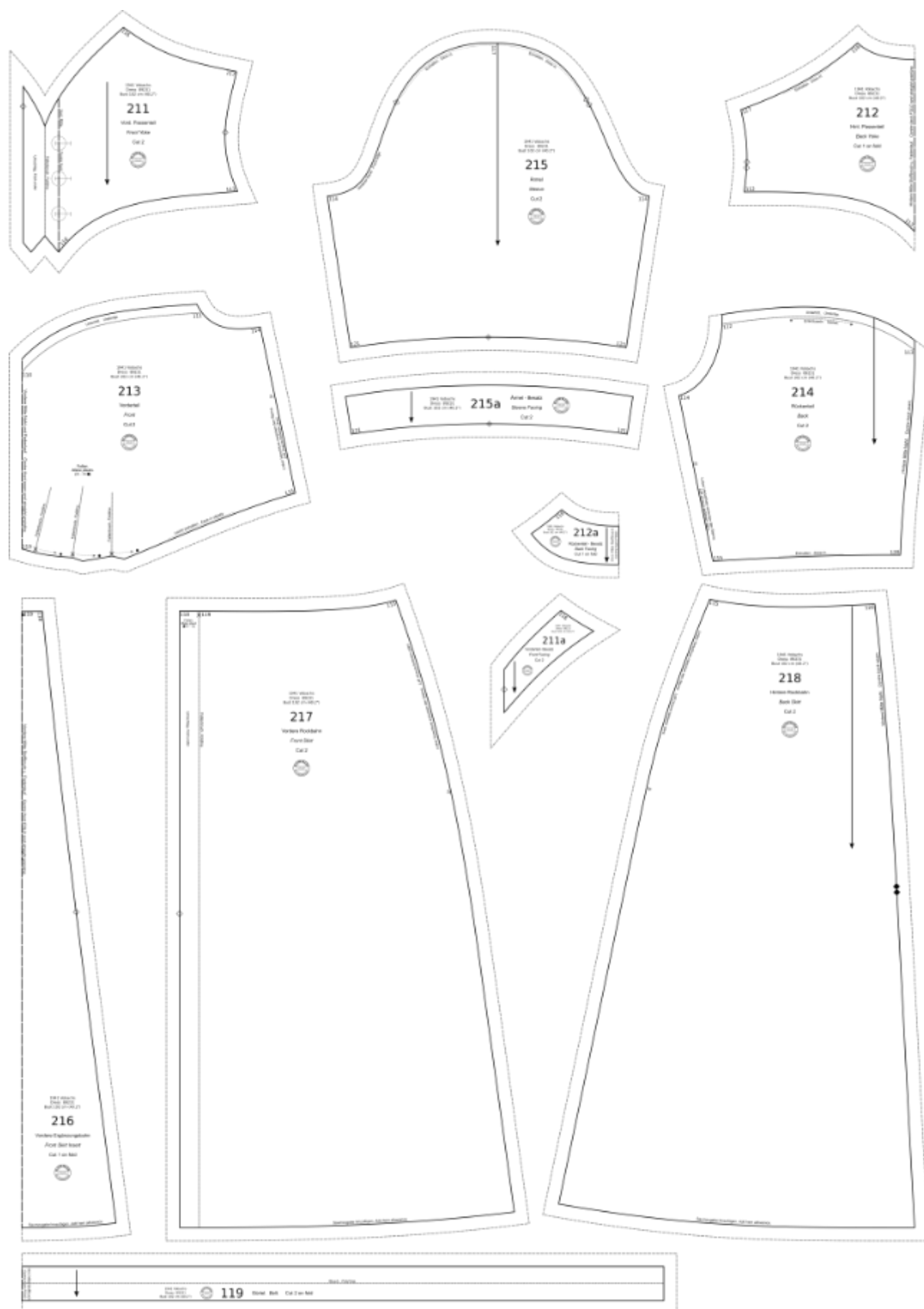
A schematic of the pattern pieces is provided on the next page. These pattern pieces retain their original numbers and the extra pieces numbered with an 'a' or 'b' refer to facing pieces we have drafted for you because they were not originally included. The original matching point numbers (MP#) on the pieces help indicate how the pieces fit together and are referred to later in the instructions.

Piece	English	Quantity	Original Deutsch
<b>211</b>	Front Yoke	Cut 2	<i>Vorderpassenteil</i>
<b>211 a</b>	Front Facing	Cut 2	<i>Vorderteil - Besatz</i>
<b>212</b>	Back Yoke	Cut 1 on fold	<i>Rückenpasse</i>
<b>212 a</b>	Back Facing	Cut 1 on fold	<i>Rückenteil - Besatz</i>
<b>213</b>	Front	Cut 2	<i>Vorderteil</i>
<b>214</b>	Back	Cut 2	<i>Rückenteil</i>
<b>215</b>	Sleeve	Cut 2	<i>Ärmel</i>
<b>215a</b>	Sleeve Facing	Cut 2	<i>Ärmel - Besatz</i>
<b>216</b>	Front-Skirt-Insert	Cut 1 on fold	<i>Vordere Ergänzungsbahn</i>
<b>217</b>	Front Skirt	Cut 2	<i>Vordere Rockbahn</i>
<b>218</b>	Back Skirt	Cut 2	<i>Hintere Rockbahn</i>
<b>219</b>	Belt (2 cm x 150 cm)	2 x on fold	<i>Gürtel</i>

The finished length of the dress is approximately 119 cm (~47")

The instructions for printing the PDF-pattern are on page 13.

## Outline of pattern pieces



## Engineering your garment - notes specific to dress 89231

- In the past, the dressmaker had to add their own seam and hem allowances because only the design's outline was provided on the large multi-pattern Schnittmusterbogen (pattern sheet). You will see on this pattern that I have marked the original design lines (usually solid black) and 1.5 cm (5/8") seam allowances (dashed grey).
- Please add your preferred hem allowances to the lower edges of the skirts.
- The centre front of the bodice (piece 213) has a centre front seam, but this piece could be cut on the fold if you prefer (remove seam allowance).
- The original pattern did not include facing pieces. Therefore, I have flat-drafted additional facings for the curved lower edge of the sleeves (piece 215a), and the back neckline (piece 212a).

The original Front Yoke piece (piece 211) has a cut-on facing, which finishes the front edges with the button closure, but it does not extend along the neckline up to the shoulder. Therefore I have flat drafted a Front Facing (piece 211a), it joins onto the edge of the original cut-on facing section and together they can finish the entire edge.

Of course, these extra facings are optional pieces, and their usefulness to you will depend on how you want to construct the dress.

The neckline edge could also be finished with a narrow biased binding or even a simple turned-over hem using the seam allowances.

Alternatively, the yokes could also be cut as double layers and therefore the neckline facings would not be necessary. You will have to adapt the pattern pieces to do this.

The choice of technique may also depend on what fabric you choose.

- The front and back yokes are joined to their respective main bodice pieces with underlap seams. To do this, press the seam allowances of the yoke piece under and then place the folded edge on top of the seam - take care to match the seam line of the yoke with the underlap line marked on the bodice pieces. Then stitch the seam close to the edge from the top through all layers. An example of an underlap seam is shown in Figure 1.

For this seam type you will not be matching the edges of the seam allowances like a 'normal' seam, and afterwards the excess seam allowance on the bodice pieces (underlap) can be trimmed.

- The dress has an in-seam closure in the left side seam, marked between the stars. Figure 2 shows an example of how to make a placket closure for press studs or hooks and eyes. Figure 3 shows an example of how to install an in-seam zipper.
- The original sketch shows a fabric belt, tied as a bow, at the waist. It was intended to be a self-drafted pattern piece, with the dimensions of 2 cm wide by 150 cm long (~0.8" x ~59"). I have made a separate Belt pattern already, it is piece 119.
- I recommend adding shoulder pads - this will help you get the original 'strong' shoulder line silhouette of this early 1940s design.

*I hope these notes help you decide how you will sew your vintage inspired 1941 dress.*

*All my best, Rebekah*

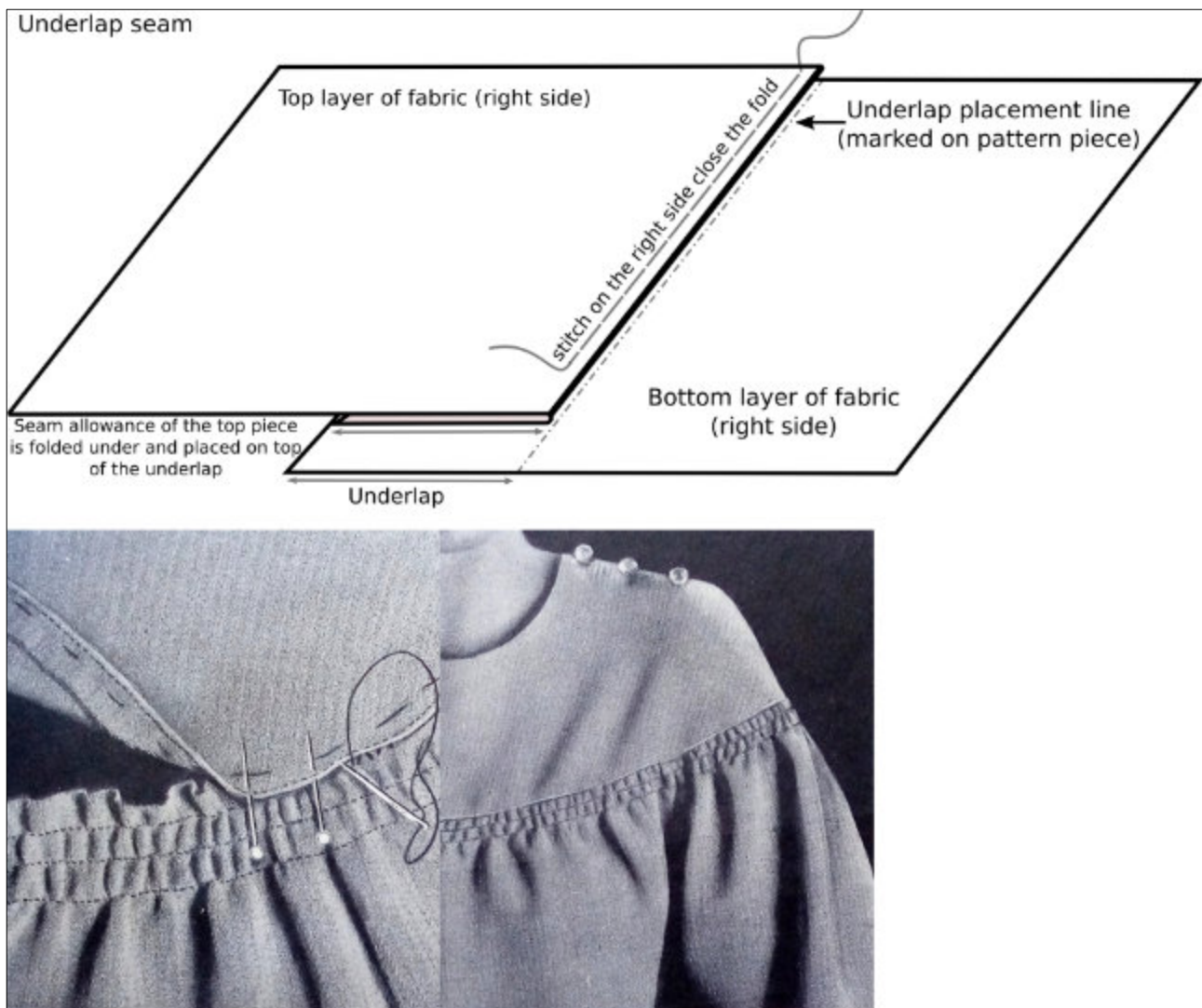


## Suggested instructions

*Abbreviations:* Seam allowances = SA; Right sides together = RST; Wrong sides together = WST; Centre back = CB; Centre front = CF; numbered Match points on the pattern = MP#.

1. I recommend interfacing the cut-on facing area on the Front Yokes because these will hold the buttonholes and the buttons.
2. Join the Front pieces at the CF seam, RST and stitch together.
3. Join the Front Facings to the edges of the cut-on facing part of the Front Yokes (guided by notch) RST and stitch together. Then join these units to the Back Facing (guided by MP116) and stitch these (shoulder seams of the facings) RST together.
4. Stitch the CB seam to join the Back bodice pieces, RST.
5. Join the Back Yoke to the Back bodice with an underlap seam - take note to first gather in the bodice section where marked on the pattern.
6. Stitch the shoulder seams, RST, taking note to ease in the back shoulder seam.
7. Finish the neckline: temporarily fold the facing unit back along the front foldline (RST) and pin the whole facing to the neckline edge- aligning the shoulder seams and the CB. Stitch in place, then clip the corners and curves , trim SA as preferred, turn the facing to the inside and press into its final position. Under-stitch as needed.
8. Neaten the edges of the facing unit and baste the front edge of the facing into position. Make the buttonholes in the right side of the yoke front and stitch the buttons onto the left yoke front.
9. Join the Front Yokes to the Front bodice with an underlap seam. Take care to align the CF at MP110.
10. Make the small pleats in the lower edge of the Front. Bring the Xs towards the dots as marked on the pattern.
11. Join the Front Skirts (pieces 217) to either side of the Front Skirt Insert (piece 216) guided by MP118.
12. Make the two pleats in the front of the skirts: on each side bring the X at MP119 towards the dot at the CF line, which is also MP119 - showing that these points must meet together. Baste the pleats in place to secure.
13. Stitch the front skirt unit to the lower edge of the Front, RST.
14. Stitch the CB seam to join the Back Skirts (pieces 218), RST.

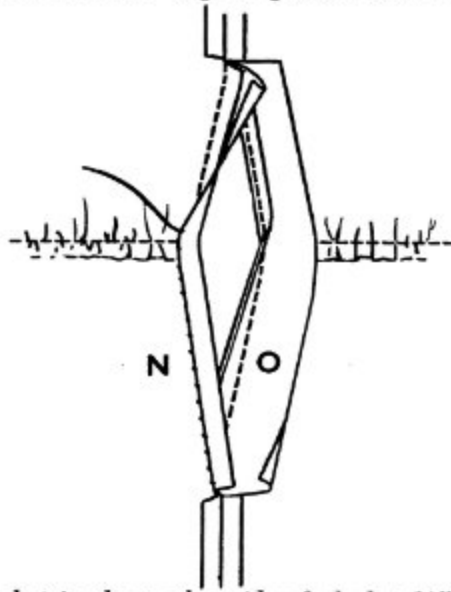
15. Stitch the Back bodice to the Back Skirts, RST.
16. Decide what type of closure you want in the left side seam (discussed previously, and Figures 2 and 3 show examples). Stitch the left side seam of the dress closed until the star that marks the top of the in-seam closure, and below it as needed. Make the closure.
17. Stitch the right side seam, RST.
18. Stitch the underarm seam on the Sleeve pieces.
19. Apply the sleeve end facing: Stitch the short edges of the facing together. Position the facings over the end of the sleeves, guided by the MP124. Stitch in place, trim and clip curved seam allowances and turn to the inside. Press again and under-stitch as needed. Neaten the raw edges on the facing. Use hand stitches to secure the facing to the underarm seam to hold in place.
20. Gather in the sleeve-head to begin to insert the sleeves into the armholes. Stitch in place, RST.
21. Add sleeve-head supports and shoulder pads as preferred.
22. Hem the bottom of the skirt.
23. To make the belt. Stitch the two layers RST and leave a small gap that enables the piece to be turned back out the right side. Turn out and press and then stitch the gap closed with hand stitches.



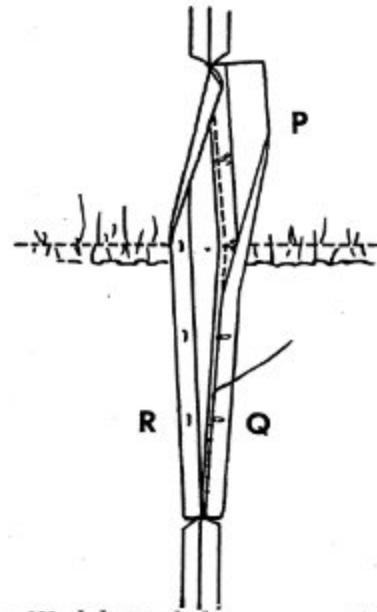
**Figure 1.** Underlap seam construction and an example from original photos.

To make this seam: press the seam allowances of the yoke pieces under and then place this folded edge on top of the seam - take care to match the seam line of the yoke with the marked underlap line on the main bodice pieces. Then stitch the seam from the top through all layers

**Hook-and-Eye Dress Placket.** Cut two bias strips the required length of placket and  $1\frac{1}{4}$ " wide. Use one to bind under edge of placket as at **N**. Lay



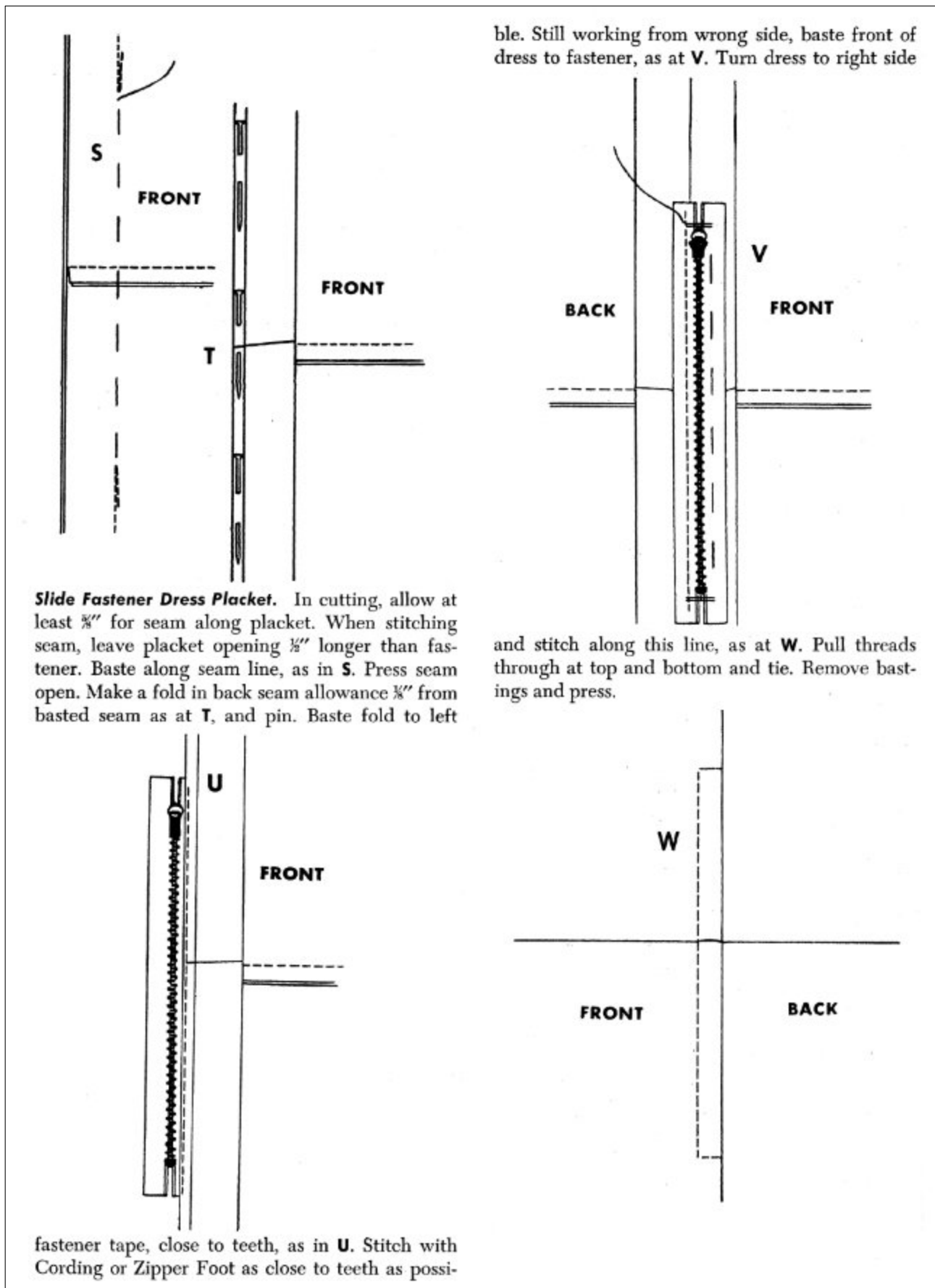
second strip along other side of placket  $\frac{1}{8}$ " from edge and stitch  $\frac{1}{4}$ " in from seam edge as at **O**. Turn seam edges to wrong side, creasing along seam line. Sew hooks along this edge as at **P**. Turn under raw edge of facing, fold edge over to cover seam edges and lower part of hooks, as at **Q**. Whip



in place. Work buttonhole eyes opposite hooks, as at **R**. Clip seam at top and bottom of under side of placket and whip ends of facing pieces together at top and bottom.

**Figure 2.** Constructing an in-seam placket for press-studs or hooks and eyes.





**Figure 3.** Installing an in-seam zipper.