

1931

Dress 6765

A summer dress from 1931

Features a round yoke with a cut-on bell-shaped sleeve.

The back of the dress can fasten at the neckline with either a tie-bow or buttons.

The waistline of the dress is dropped to the high hipline.

The front and back skirts, together, form a full-circle.

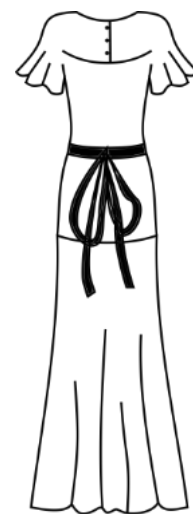
Available in one original size

Bust 90 cm (35.4")

Waist 72 cm (28.3")

Hip 100 cm (39.4")

1.5 cm (5/8")
seam allowance included



back view schematic

Original magazine feature from 1931



Vobach-Schnitt 6762***
(90 Pf.), Größe II ob. III.
Sommerliches Komplet
aus Seidentoile. Der Rock
ist der Weste angeheftet.
(Einzelansicht 6762a sowie
Rückansicht.) Schnitt IV
(Figur 33—41), Größe
III, auf dem Schnittmuster-
bogen 104. (Erforderlich:
etwa 4,25 m
dunkler Stoff, 1,10 m
heller Stoff, je 80 cm
breit.)

Vobach-Schnitt 6763***
(90 Pf.), Größe II ob. III.
Sommerkleid aus Krepp
de Chine mit einseitiger
Glocke, angechnittener
Patte und unregelmäßigem
Kragenschal. (Hierzu
Rückansicht.) Schnitt V
(Figur 42-49), Größe III,
auf dem Schnittmuster-
bogen 104. (Erforderlich:
etwa 3,50 m Stoff,
0,40 m Besatzstoff, je
100 cm breit.)

Vobach-Schnitt 6764***
(90 Pf.), Größe I oder II.
Sommerkleid in jugend-
licher Form mit vorn
edigem Halsauschnitt
und kurzen Puffärmeln.
(Hierzu Rückansicht.)
Schnitt VI (Figur 50-58),
Größe II, auf dem Schnitt-
musterbogen 104. (Erforderlich:
etwa 3,75 m
Stoff, 0,30 m Besatzstoff,
je 80 cm breit, 0,85 m
Band 3 cm breit.)

Vobach-Schnitt 6765***
(90 Pf.), Größe I oder II.
Sommerkleid aus be-
drucktem Krepp Geor-
gette mit runder Patte
und angechnittenen Glof-
fenärmeln. (Hierzu Rück-
ansicht.) Schnitt VII (Fi-
gur 59—63), Größe I,
auf dem Schnittmuster-
bogen 104. (Erforderlich:
etwa 4,75 m Stoff 100 cm
breit, 3,30 m Band
3½ cm breit.)



Hierzu als Gratis-Beilage „Vobachs Schnittmusterbogen“ Nr. 104

A little chat about our traced vintage patterns



“Will it fit me?”

General information for all patterns: measure the bust/chest, waist and hip widths on the pattern pieces and compare them with those given in the size description above, the difference between each of the measurements will tell you the ‘ease’ given in this design. Compare these with your own measurements and make necessary changes to suit your size and fit preferences; for example, do you like your clothes fitted or looser than the eases given in the pattern?

Check the length-wise body measurements on the pattern pieces too; and note where the gathers, darts and other design lines will be positioned on your body to see if they sit at a flattering position that you like. Importantly, do length-wise changes before width-wise changes on the pattern pieces.

Consider making a test garment from a similar fabric, and get help to fit those difficult seams that you cannot reach or easily see yourself.

The solid lines on the pattern pieces represent the original design's outline.

1.5 cm (5/8") seam allowance has been added to all pattern pieces.

Please add hem allowances to suit your preferred construction methods.

Introduction and links to helpful references

The original pattern was published with only a small schematic of the pattern pieces and a very brief description. **As written in the sales listing for this design, prior sewing experience is required for this vintage pattern because it is sold with written instructions that do not have diagrams.**

Regarding instructions: a basic knowledge of sewing techniques and terminology are needed; therefore I assume that you know already how to cut out and mark your fabric, when to press, where to interface etc.. I can help you place the pattern pieces in the right place and suggest a suitable sequence of construction, however, the finer details regarding exactly which sewing methods to use is a personal choice.

I've also collated a reference library of vintage sewing books (freely available online or scanned from my own collection), which can help you.

LINK: [To Sewing Resources Here!](#) (Customers who order printed patterns will receive a PDF version of this guide with the active hyperlinks included.)

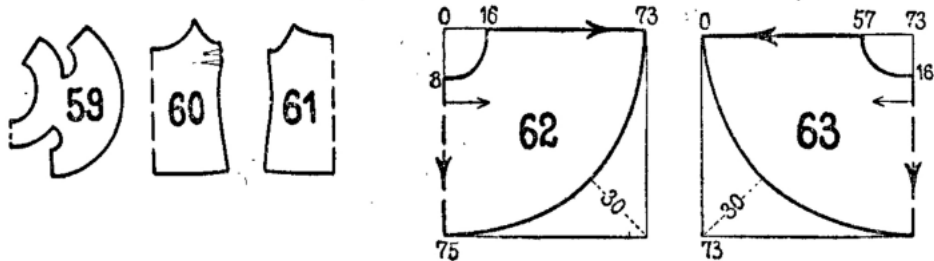
In Deutsch: [‘Grundlehre der Schneiderei’ von 1936.](#)

There are different ways this garment could be made and I will enjoy hearing how you decided to make it and if you have any suggestions. I love seeing pictures of finished garments and you are welcome to send me photos (I don't share them with anyone), or perhaps tag us on Instagram, [@slowmadeingermany_patterns](#).

You're in charge of making a really unique vintage-inspired garment!

Original outline and description in Deutsch

VII. Sommerkleid aus bedrucktem Krepp Georgette. 6765. Größe I.
 Figur 59. Passe mit angeschnittenem Kermel.
 60. Vorderteil.
 61. Rückenteil.
 62. Vorderbahn.
 63. Hinterbahn.
 Beim Zuschneiden der Rockbahnen, Figur 62 und 63, sind die den Längsfadenlauf angegebenden, eingezeichneten Pfeile zu beachten. Der Bindegürtel ist $3\frac{1}{2}$ cm breit und 2,40 m weit. Die Rückenschleife ist $3\frac{1}{2}$ cm breit und 90 cm lang.

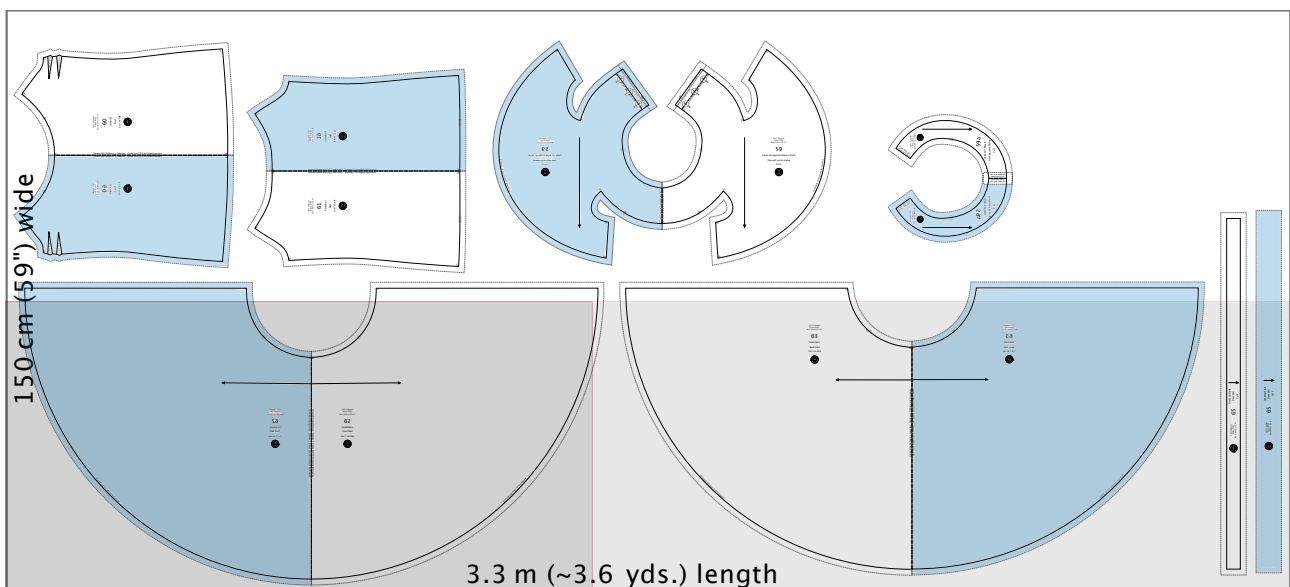


Requirements

The original pattern states

- 4.75 m (~5.2 yds.) of 100 cm (~39.4") wide fabric.
- Using the one-way layout below, I estimate approximately 3.3 m (~3.6 yds.) of 150 cm (~59") wide plain fabric.
- Materials to make a short closure in the back neckline, e.g. buttons and loops.
- Materials to make an in-seam closure in the side seam, e.g. a zipper (~18 cm to 25 cm, [~7"-10"]), or press studs or hooks and eyes.
- The belt. The original sketch shows the fabric belt in contrasting fabric, therefore it isn't shown on the fabric layout below. This is a 'long' belt (finished dimensions are 3.5 cm x 2.4 m), so perhaps consider ways to cut this piece - for example, economise on fabric by separating the pattern piece into two or three sections instead of one long piece.

A suggested one-way napped cutting layout



The instructions for printing the PDF pattern are on page 11.

[WEB-LINK: Guide to assembling our PDF patterns.](#)

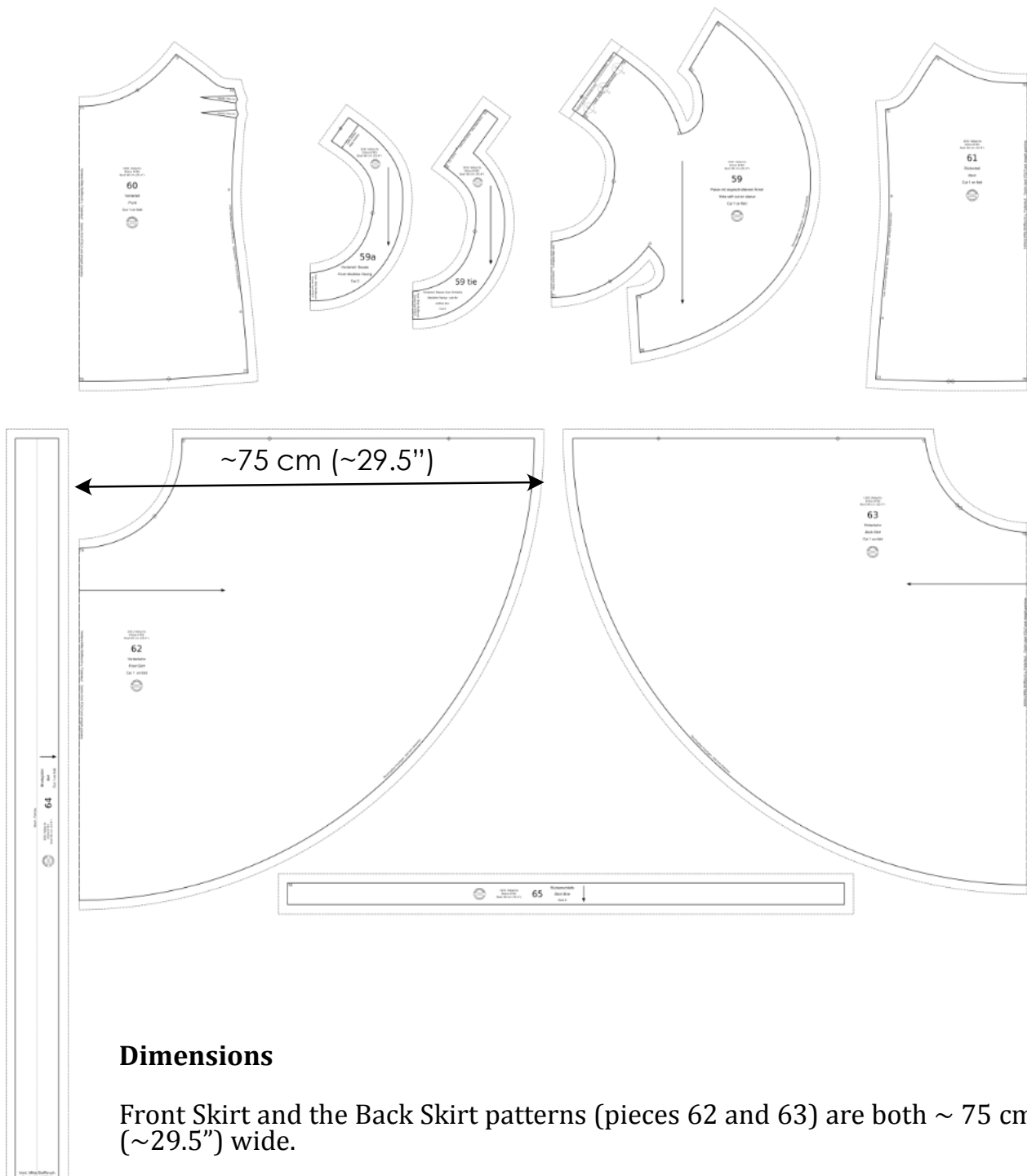
Guide to pattern pieces

A schematic of the pattern pieces is provided on the next page. These pattern pieces retain their original numbers. Extra pieces numbered with an 'a', 'b' or 'c' etc., refer to pieces I have flat-drafted for you because they were not originally included, or they needed to be traced off as separate pieces. The original matching point numbers (MP#), e.g. in the corners of pieces, are shown on the pattern pieces and they indicate how the pieces fit together.

Piece	English	Quantity	Original Deutsch
The original pattern gave no separate facing pieces. Therefore I have flat-drafted two neckline facings (piece 59a and 59-bow) for the different back neckline closure options.			
59	Yoke with cut-on sleeve	Cut 2	<i>Passe mit angeschnittenem Ärmel</i>
59a	Neckline Facing - use for adding a button closure at the back neckline	Cut 2	<i>Vorderteil - Besatz</i>
59-tie	Neckline Facing - use for adding ties at the back neckline	Cut 2	<i>Vorderteil - Besatz (für Schleife)</i>
60	Front	Cut 1 on fold	<i>Vorderteil</i>
61	Back	Cut 1 on fold	<i>Rückenteil</i>
61a	Back Facing	Cut 1 on fold	<i>Rückenteil - Besatz</i>
62	Front Skirt	Cut 1 on fold	<i>Vorderbahn</i>
63	Back Skirt	Cut 1 on fold	<i>Hinterbahn</i>
64	Belt	Cut 1	<i>Binddegürtel</i>
65	Back Bow (if using)	Cut 4	<i>Rückenschleife</i>

In the past, the dressmaker had to add their own seam and hem allowances because only the design's outline was provided on the large multi-pattern sheet (Schnittmusterbogen). You will see on this pattern that I have marked the original design lines (usually solid black) and 1.5 cm (5/8") seam allowances (dashed grey).

Outline of pattern pieces



Dimensions

Front Skirt and the Back Skirt patterns (pieces 62 and 63) are both ~ 75 cm (~29.5") wide.

When cut on the fold, the sweep of the hem of each skirt piece is ~150 cm (~59"). Therefore the full sweep of the skirt is ~3 m (~3.3 yds.)

The length of the skirt - from the centre front's dropped-waistline seam to the hem - is ~57 cm (~22.5")

The length of the bodice - centre front neckline to hem - is ~53.5 cm (~21").

Finished length of the dress - neck point to hem - is ~ 119 cm (~47")

Engineering your garment - notes specific to dress 6765

- Please add your preferred hem allowances to the lower edges of the skirts and the sleeve part of the Yokes (piece 59).
- The circumference of the neckline is ~55 cm (~21.6"). Although this may fit over some people's heads, it's a bit tight - especially if you don't want to mess up a fabulous vintage hairstyle you've just perfected! I recommend adding a closure to the centre back of the Yoke.
- My suggestions for a closure at the back neckline:

Option 1. The original yoke pattern has an opening in the centre back of the neckline that fastens with a tied-bow. The ties are made from piece 65. On the Yoke (piece 59), I have marked a separate 1.5 cm seam allowance line, cut the pattern piece at this line if you want to have the ties. Use the Neckline Facing, piece '59-tie', it will finish the neckline and the centre back, the ends of the ties are incorporated into that seam at MP70.

Options 2. As per a customer's request, I have added a closure for three buttons in the centre back seam of the Yoke. Use the Neckline Facing, piece 59a, which will finish both the underlap on the left side and the over lap on the right side, and the whole neckline.

Alternatively, the neckline and centre back edges could also be finished with a narrow biased binding or even a simple turned over hem using the seam allowances. The choice of technique may also depend on what fabric you choose, and/or adapt the pattern as needed.

- The original pattern does not have any markings for an in-seam closure in the left side seam, which is typical of most dresses from this era. The fit of the dress may be loose enough to get on and off for some figures, but other people may prefer a closure. Therefore, I have added star markings for a closure - please check its length and position will suit the wearer.

An example of how to construct an in-seam side placket, for either press studs or hooks and eyes, is shown in Figure 1.

Alternatively, an in-seam zipper could be installed. An example of how to install an in-seam zipper closure is shown in Figure 2. At the zipper area, please consider if you need more width than the 1.5 cm seam allowance - add more to the pattern before cutting out.

Another alternative for a closure is to add a zipper to the centre back of the dress, from the neckline in the yoke and into the waistline. You will need a centre back seam in the back bodice to do this, and make the necessary pattern adjustments.

- The original finished dimensions of the contrasting fabric belt are 3.5 cm x 2.4 m. The bow is obviously tied with long loops, so adjust the length as preferred.

*I hope these notes help you decide how you will sew your early 1930s vintage inspired dress.
The next page includes some suggested instructions.*

All my best, Rebekah

Suggested instructions

Abbreviations: Seam allowances = SA; Right sides together = RST; Wrong sides together = WST; Centre back = CB; Centre front = CF; numbered Match points on the pattern = MP#.

1. I recommend stay-stitching the seams on the Yoke (piece 59) between MP72 and MP73, and MP74 and MP73 - you will need to clip into the SA before stitching so these curved sections can be joined to the straighter seams on the bodice.
2. Stitch the darts in the Fronts.
3. If using the Front Facings (piece 59a or 59-bow), finish/neaten their outer edges.
4. Back closure Option 1 with ties

Make the ties. For each tie, stitch both layers, RST, and leave one of the short ends unstitched. Turn back out to the right side and press.

Place the unstitched ends of the ties at each side of the back neckline, at MP70.

Place the Neckline Facing (piece 59-tie) onto the neckline of the Yoke, RST, matching the CF, the notches near the shoulders and the CB. The ties will be sandwiched in between. Stitch in place. Clip the corners and curves and turn the facing to the inside and press in place.

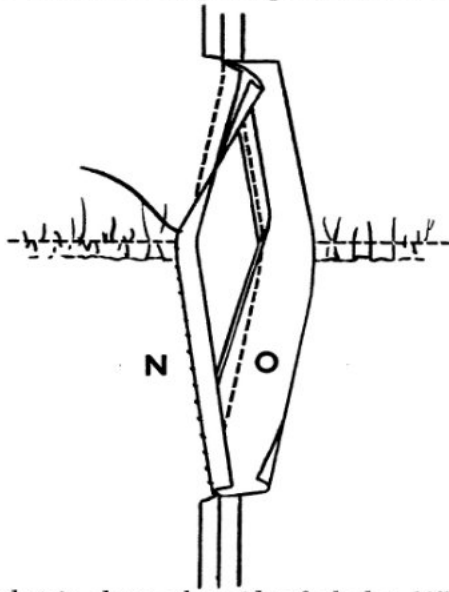
Back closure Option 2 with buttons

Place the Neckline Facing (piece 59a) onto the neckline of the Yoke, RST, matching the CF, the notches near the shoulder and the centre back. Stitch in place. Clip the corners and curves and turn the facing to the inside and press in place.

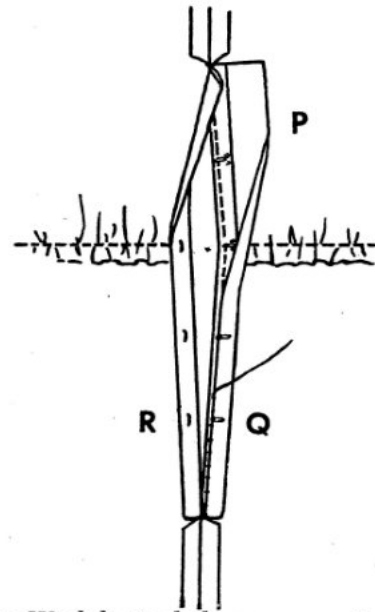
Make the buttonholes in the right-hand side (overlap) and add buttons on the left (underlap). Lay the right side over the left side, align the CB lines and baste in place.

5. Understitch, or topstitch, the neckline facing to the neckline if preferred.
6. Stitch the top of the Front to the front part of the Yoke, guided by the MP71 and MP72. For stitching the seam between MP72 and MP73, you will need to clip into the SA of the Yoke piece to fit the curve onto the straighter seam.
7. Stitch the top of the Back (piece 61) to the back part of the Yoke, guided by MP74 and MP73. For stitching the seam between MP74 and MP73, clip into the SA as before.
8. Stitch the Front Skirt to the lower edge of the Front.
9. Stitch the Back Skirt to the lower edge of the Back.
10. Stitch the underarm seams from MP76 to MP73 and hem the sleeves.
11. Stitch the remaining side seams. Install an in-seam zipper or placket at the waist/hip if required.
12. Hem the skirts.
13. Make the belt. Stitch both layers, RST, and leave a gap to turn the piece back to the right side. Turn back out and press, then stitch the gap closed.

Hook-and-Eye Dress Placket. Cut two bias strips the required length of placket and $1\frac{1}{4}$ " wide. Use one to bind under edge of placket as at **N**. Lay



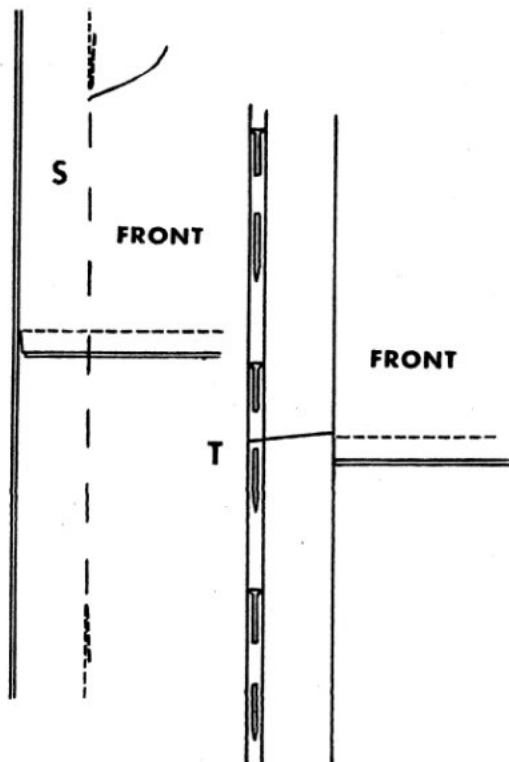
second strip along other side of placket $\frac{1}{8}$ " from edge and stitch $\frac{1}{4}$ " in from seam edge as at **O**. Turn seam edges to wrong side, creasing along seam line. Sew hooks along this edge as at **P**. Turn under raw edge of facing, fold edge over to cover seam edges and lower part of hooks, as at **Q**. Whip



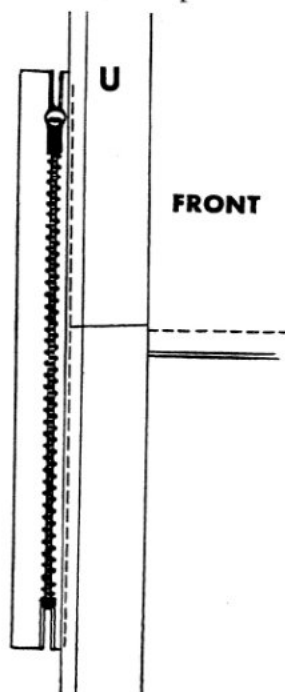
in place. Work buttonhole eyes opposite hooks, as at **R**. Clip seam at top and bottom of under side of placket and whip ends of facing pieces together at top and bottom.

R Q

Figure 1. Constructing an in-seam placket for press-studs or hooks and eyes.

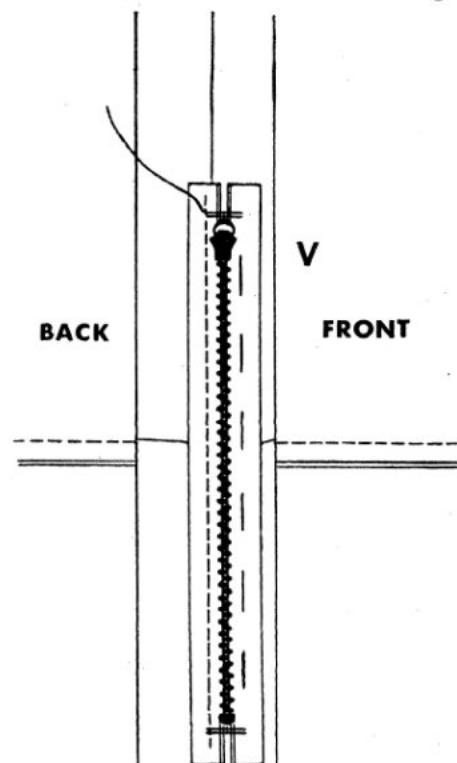


Slide Fastener Dress Placket. In cutting, allow at least $\frac{3}{8}$ " for seam along placket. When stitching seam, leave placket opening $\frac{1}{2}$ " longer than fastener. Baste along seam line, as in **S**. Press seam open. Make a fold in back seam allowance $\frac{1}{8}$ " from basted seam as at **T**, and pin. Baste fold to left



fastener tape, close to teeth, as in **U**. Stitch with Cording or Zipper Foot as close to teeth as possi-

ble. Still working from wrong side, baste front of dress to fastener, as at **V**. Turn dress to right side



and stitch along this line, as at **W**. Pull threads through at top and bottom and tie. Remove bastings and press.

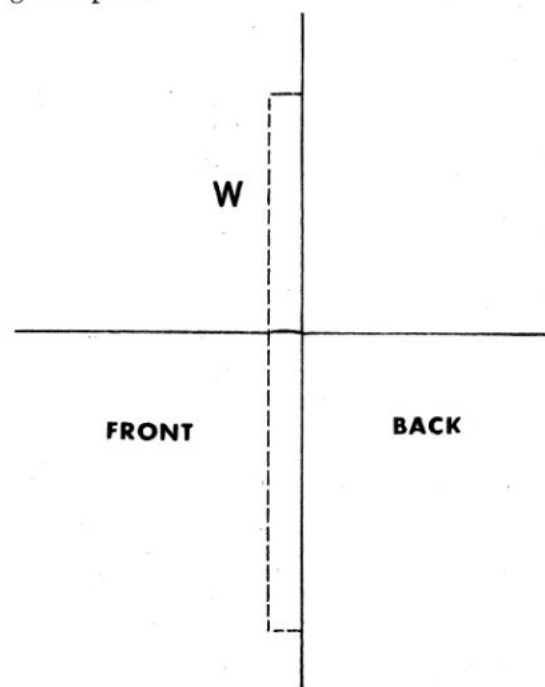


Figure 2. Installing an in-seam zipper.

Source of figures 1 & 2: Singer Sewing Book, (1949) Published by the Singer Sewing Machine Company.

Printing Instructions

The pattern is supplied in three formats, in order to cover multiple printing scenarios.

- 1) A4 page tiles that print within an area of 18 x 26.7cm*.
- 2) US_letter page tiles that print within an area of 7.5 x 10 inches*.
- 3) A0 sheets; full-sized 84.1 cm x 118.9 cm

[WEB-LINK: Guide to assembling our PDF patterns.](#)

Printing tiles

The tiled patterns are formatted to be printed on separate sheets of paper and need to be taped together. A grid of pale grey numbers underlies the pattern pieces and helps you reassemble the pages in their correct order according to the Print Layouts shown on the following two pages.

Print Layouts: each row usually has 6 pages across, in portrait-view, and the number of rows depends on the total area needed for the pattern. To help you accurately align the pattern, each page has 1 cm-sized diamonds in the corners and sides, with no overlap. Do NOT change the scale of the pages or 'shrink to fit' in any way. The scale should be 100%.

Choose the setting: 'Actual Size'.

Check that your PDF reader software prints the pattern at the correct scale. The very first page contains a test square with both centimeters and inches. It is wise to print the first page by itself, measure to check, then proceed to print the remaining pages when the scale is correct.

Print from a PDF reader, such as Adobe Reader software ([LINK](#)), on a desktop computer. I do NOT recommend printing this PDF pattern by opening the file directly in a browser, such as Firefox or Chrome, nor from a phone. The new built-in PDF readers on phones and browsers are beginning to show some incorrect printing results that often distort the pattern's scale.

Printing individual pages: e.g. to print a single pattern piece(s) and not others, consult the print layout with the numbered pages on it, because this will help you identify which specific pages you need.

Printing large format A0 sheets

The PDF for the A0 sheet size can be sent to a print shop and printed at full-scale.

An A0 sheet is 84.1 cm (~33") wide by 118.9 cm (~47") long. The pattern is positioned within a 1.5 cm (5/8") border from the edges of the A0 sheet.

This pattern fits 3 x A0 sheets.

Printers and print shops are different all over the World; we have tried our best to format our patterns to meet the most common requirements, however, please contact us if you need assistance, at email: Slowmadeingermany@gmail.com.

An important note about Copyright and fairness

The outlines of patterns on the original multi-pattern sheet are out of copyright (due to age and the fact that the companies no longer exist today), but the digitizing work we have undertaken in order to provide these patterns to you in an easy-to-use modern format, as well as the text for the instructions and graphical layouts, are copyrighted (Slow-Made in Germany).

We are funding the curation, research, restoration and storage of 1000s of old pattern books; therefore we would appreciate that you understand and respect that this file is not for free-distribution without our prior knowledge and consent. We are not making buckets of money here, we are simply attempting to fund our work and help rescue these lovely designs from obscurity!

Enjoy sewing your vintage inspired garment!